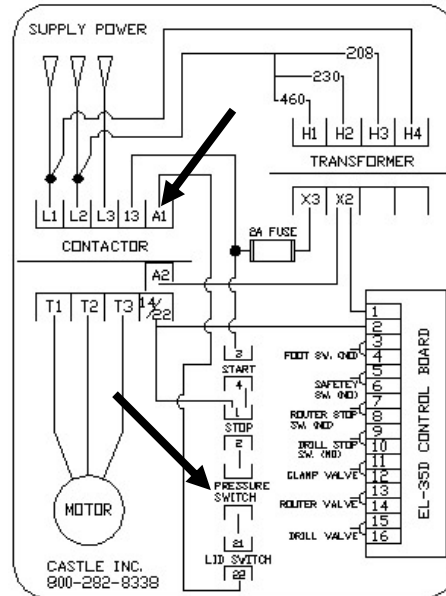
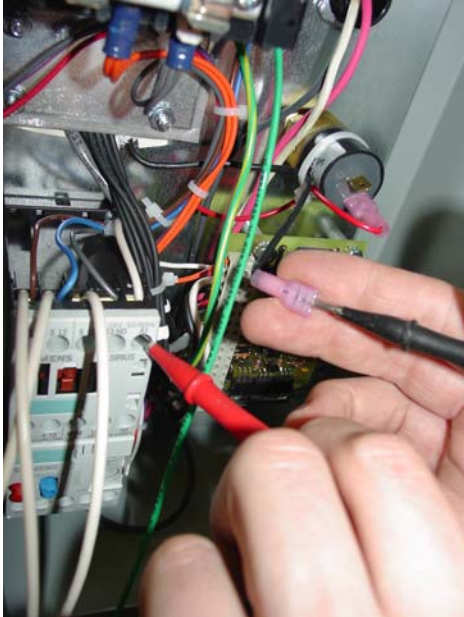


Safety Interlock Switch (NO)

- Disconnect power and air from the machine.
- Unplug the black wire on the pressure switch located in the control box just above the control board.
- Touch continuity tester to “A1” on the contactor and to the **black wire** that was removed from the pin on the pressure gauge.
- When lid is closed, the switch tester should read closed. When the lid is opened, the tester should read open.



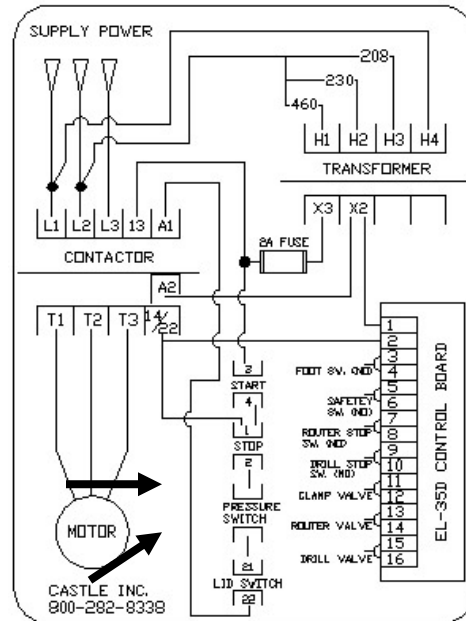
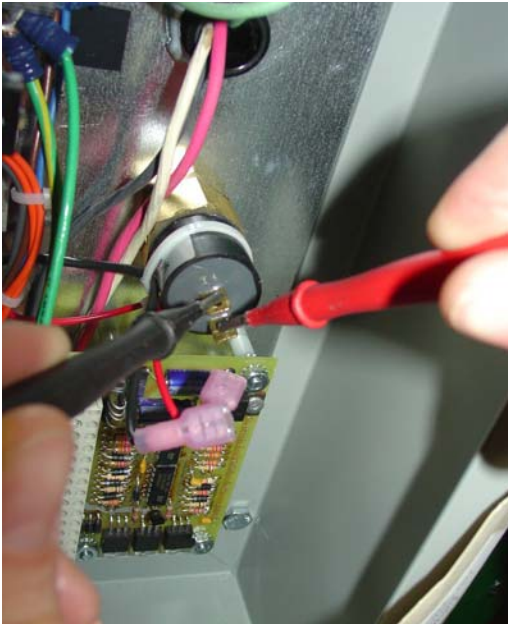
For Machines without the Air Pressure Switch:

- Disconnect power and air from the machine.
- Touch the continuity tested to “A1” on the contactor and pin #2 at the back of the stop switch.
- When the lid is closed, the switch tester should read closed. When the lid is opened, the tester should read open.



Air Pressure Switch (NO)

- Disconnect power and air from the machine.
- Unplug the black and red wires from the pressure switch
- Touch both of the pins on the pressure switch with the tester pins.
- The switch should read open with no air attached to the machine.
- Attach air to the machine and the switch should then read closed.



NOTE:

The air pressure switch is no longer used in the TSM-35. Its removal does not constitute a safety issue.

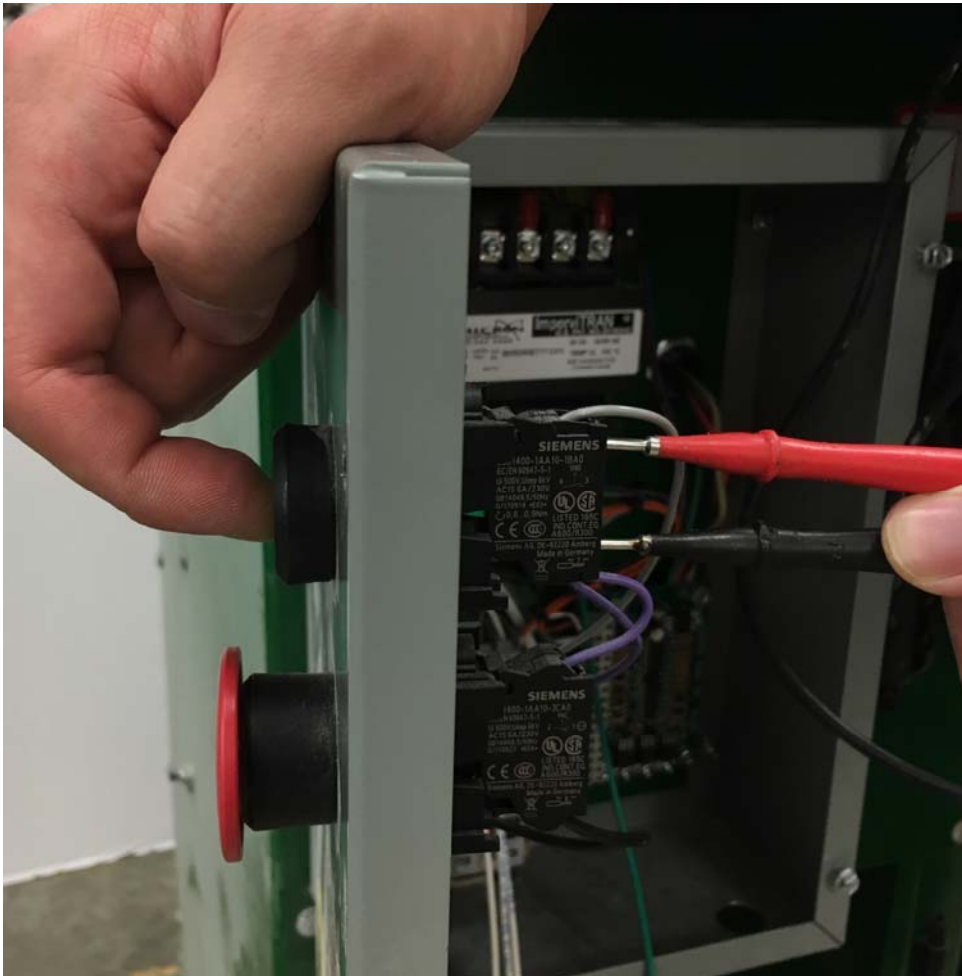
To bypass the switch in the system:

- Unplug the black and red wires from the pressure switch
- Cut the terminals off the wires, and strip the insulation
- Twist the ends together lightly
- Used a locknut to secure the wires



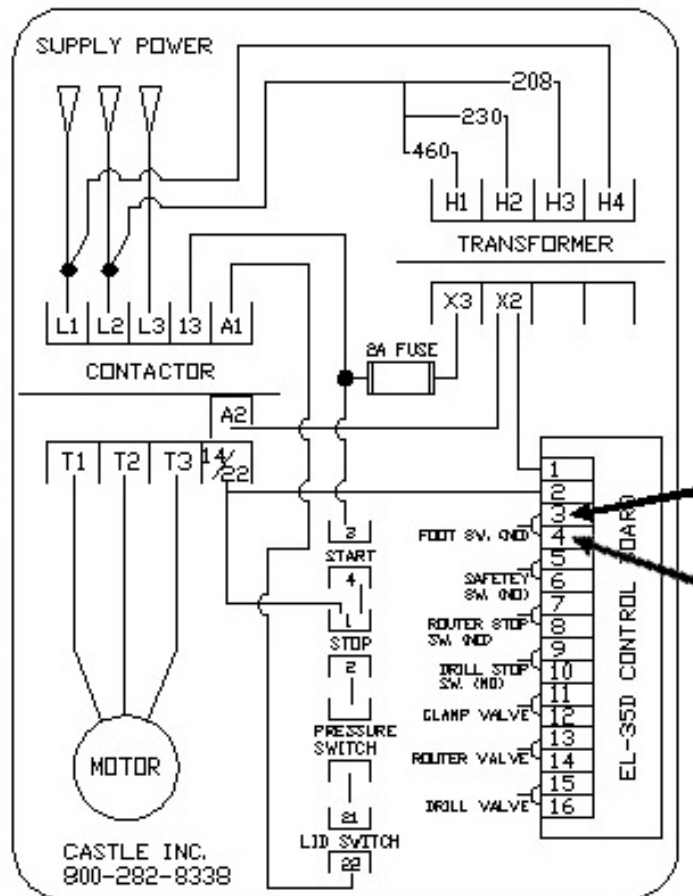
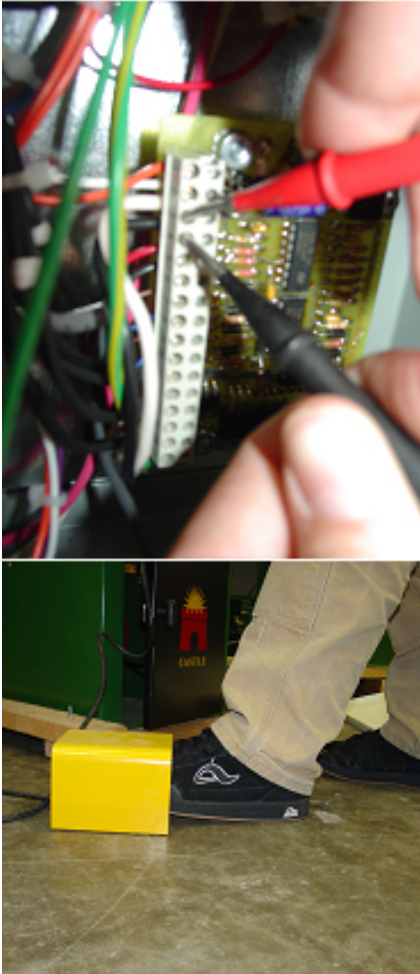
Start Switch (NO)

- Disconnect air and power from the machine
- Locate the contact block for the start switch located on the back side of the control box enclosure door.
- With a continuity tester, touch “-3” and “-4” terminals on the contact block.
- The switch should read (NO) at rest. When the start button is depressed the switch should close.



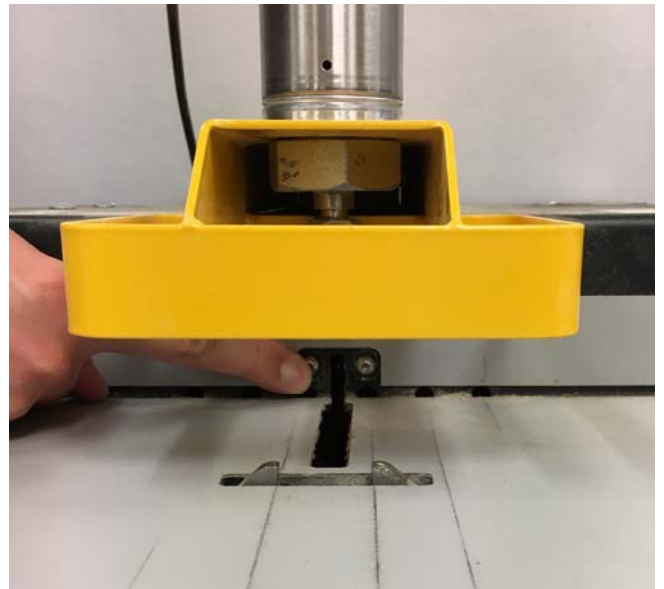
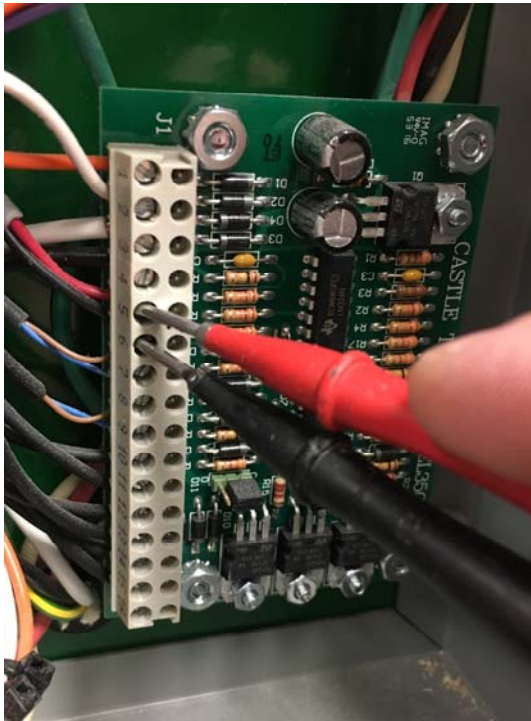
Foot Switch

- Disconnect air and power to the machine
- Locate pins “3” and “4” on the pin strip of the control board.
- Touch continuity tester pins to “3” and “4” on the pin strip and the switch should read open.
- Step on the foot peddle while still touching the pins and the continuity tester should read closed.



Safety Blade Switch

- Disconnect power and air to the machine.
- Make sure the case top is shut.
- Locate pins “5” and “6” on the pin strip in the control box.
- Touch continuity tester to “5” and “6” on the pin strip.
- Continuity tester should read open.
- Press in safety buttons under the clamp guard and tester should read closed.



Stop Switch (NC)

- Disconnect air and power to the machine
- Locate the stop switch contact block on the back of the control box enclosure door.
- Use continuity tester and touch the pins to “-1” and “-2” on the stop switch contact block.
- When the stop switch is pushed in, the continuity tester should read open.
- When the switch is in the out position, the tester will read closed.

